

**KÄRCHER**

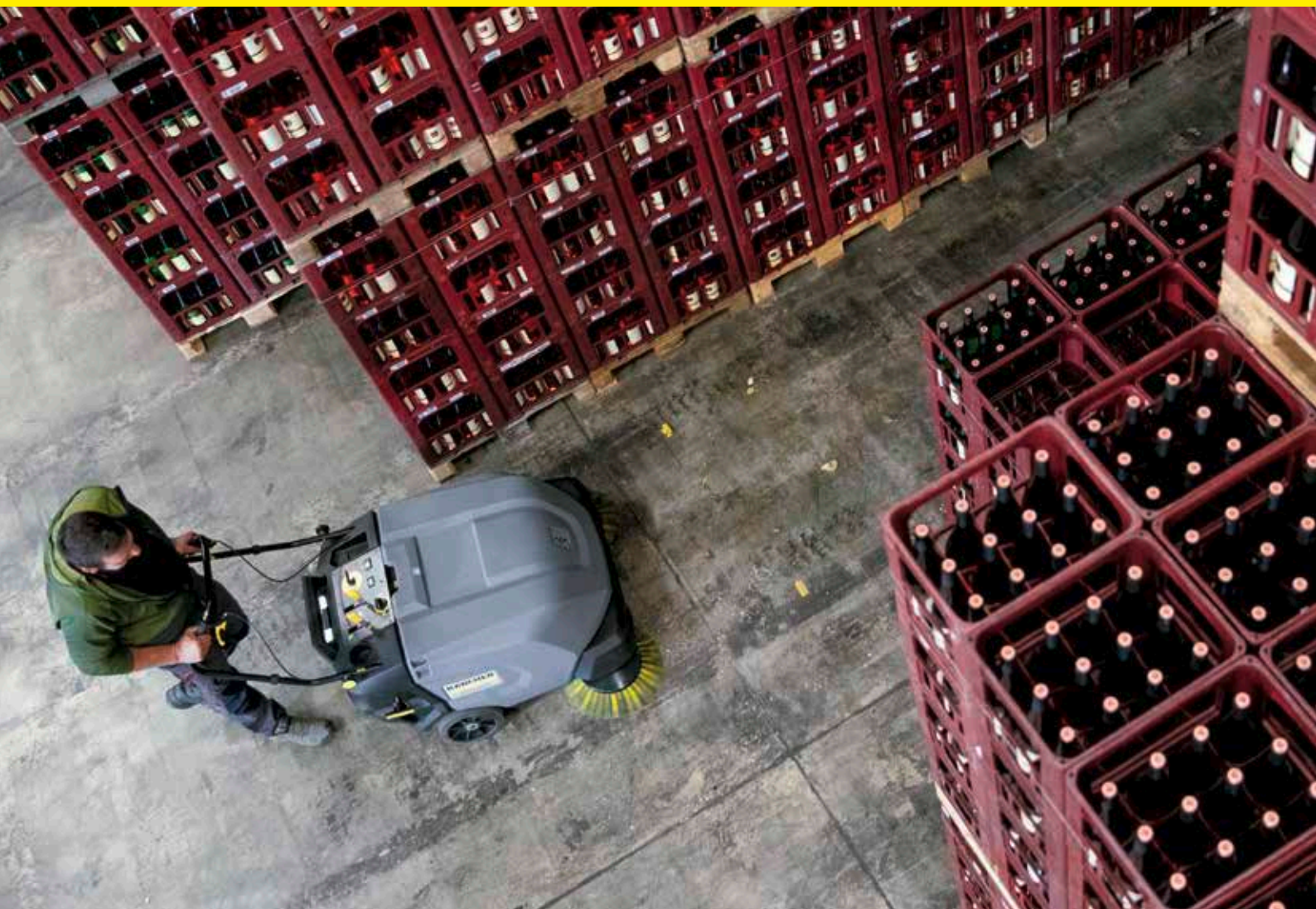
# ALWAYS KEEPING CLEAN

Compact and walk-behind sweepers/  
vacuum sweepers. **karcher.com**



**PROFESSIONAL** | WALK-BEHIND SWEEPERS/VACUUM SWEEPERS

# WHAT'S INSIDE:



## **4 Cleaning floors with walk-behind sweepers and vacuum sweepers**

- 6 Advantages over sweeping with a broom
- 8 Cost-effective usage

## **10 Model overview**

### **12 Walk-behind vacuum sweepers**

- 14 KM 85/50 W
- 16 KM 75/40 W

## **18 Compact sweepers and vacuum sweepers**

- 20 KM 70/30 C and KM 70/25 C
- 22 KM 70/20 C

## **24 Technical data**

## **26 Kärcher Services and digital solutions**

## **27 Sustainability**



**Tough on dirt and dust:** with our walk-behind sweepers/vacuum sweepers, you are well-prepared for cleaning processes in the industrial sector. Our sweeper models are ergonomic, easy to operate and get right into the

corners of yards, paths, workshops and halls. Whether manually operated or traction driven, you will definitely find the right option in our Professional range to suit your requirements.



# MAXIMUM PERFORMANCE, MINIMUM EFFORT

Our walk-behind sweepers/vacuum sweepers enable you to clean effortlessly and efficiently.





## **DID YOU KNOW ...**

... that vacuum sweepers can also pick up larger objects and coarse dirt, such as pebbles, metal shavings, screws and even plastic bottles up to 0.5 litres?



# BETTER THAN ANY BROOM

There are many good reasons to opt for mechanical cleaning methods. Your health being just one of them.

**Swirling dust and slow progress make manual sweeping with a broom a real feat. The larger the area, the greater the physical exertion. And the result is often still not up to scratch. A walk-behind sweeper/vacuum sweeper can do what a broom cannot.**

## **Cost-effectiveness versus a broom**

Time is money, we all know that. With a walk-behind sweeper/vacuum sweeper, you can achieve up to ten times the area performance of a broom, which saves you valuable working time and keeps costs down. This also applies to the maintenance of our machines. They are robust and built to last.





### **Health and safety**

Our health is our greatest asset. Protect yourself! Manual cleaning with a broom whips up a lot of dust, which enters your airways and settles in your lungs, where it causes long-term damage. The filter systems

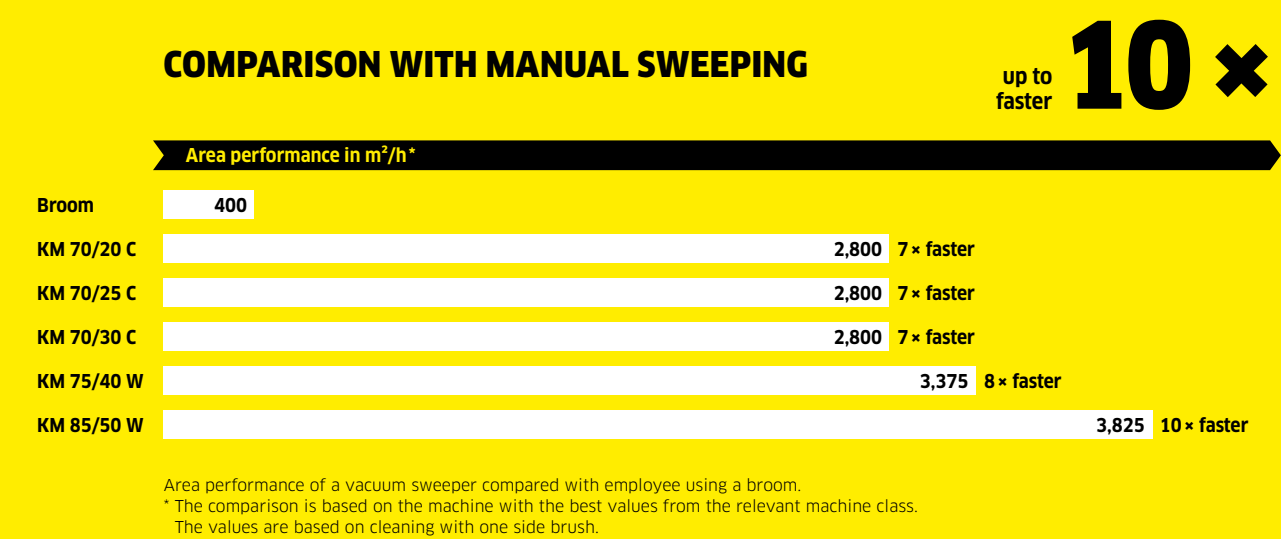
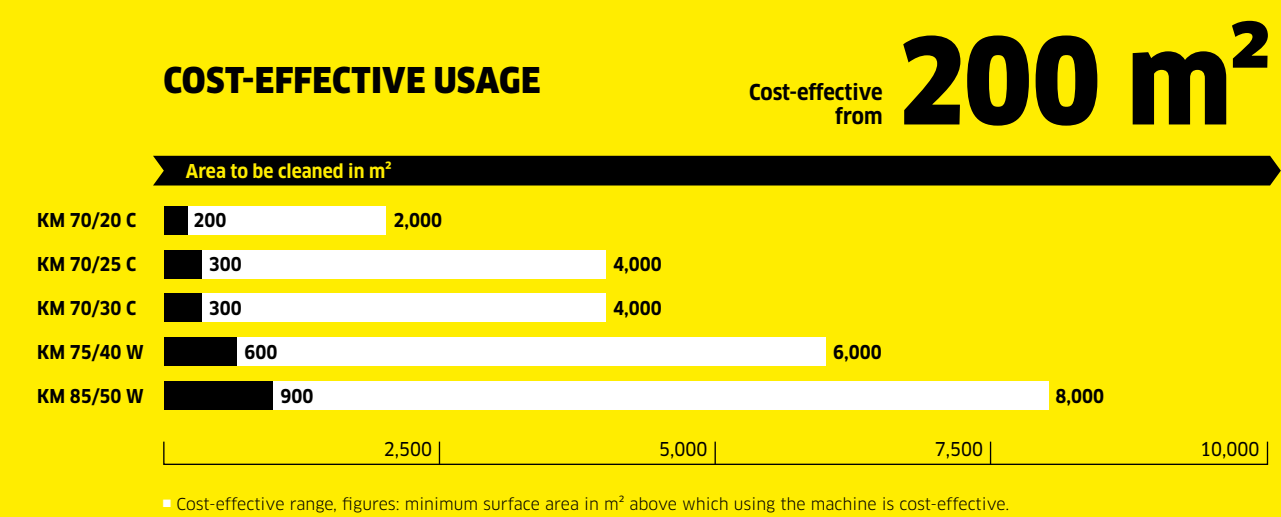
with suction that are built into our models significantly minimise this health risk. Another advantage over broom cleaning is our machines are designed to be operated from an upright position. This not only makes cleaning easier but also prevents posture problems.







The numbers don't lie. We have summarised the key facts to show you the economic advantages of our sweepers/vacuum sweepers compared with a broom.\*





# WHICH ONE IS RIGHT FOR YOU?

## Walk-behind vacuum sweepers

Traction drive for high manoeuvrability and easy, ergonomic handling.  
Ideal for cleaning areas measuring between 600 and 8,000 m<sup>2</sup>.



### **KM 85/50 W**

Walk-behind vacuum sweeper supplied with battery and charger as standard for high area performance. With floating sweeper roller and large filter area.



### **KM 75/40 W**

Perfect for indoor areas measuring approx. 600 m<sup>2</sup> or more. Highly manoeuvrable vacuum sweeper with infinitely variable sweeping speed. Available as a battery-powered or petrol-engined version.



There are many factors to take into account when choosing the right model for you. We have the right solution for every requirement.

How big is the area to be cleaned? How manoeuvrable does the sweeper need to be? What kind of floor needs to be swept? Do you prefer a manually driven or motorised option? Before purchasing a sweeper/ vacuum sweeper, there are many questions that have

to be answered in order to choose the right model for you. With our portfolio of professional machines, we can help you make the right choice for your individual requirements.

### **Compact sweepers/ vacuum sweepers**

Easy to operate and quickly to hand.  
Ideal for cleaning areas measuring between 200 and 4,000 m<sup>2</sup>.



### **KM 70/30 C and KM 70/25 C**

Manual sweepers designed for cleaning indoors and outdoors. Electric sweeper roller drive and side brush drive for hassle-free, low-dust sweeping.



### **KM 70/20 C**

Through manual cleaning with a wheel drive, the flexible and compact manual sweeper delivers optimum cleaning results on different types of floor.





# RUNS VIRTUALLY BY ITSELF

Walk-behind vacuum sweepers have the advantage that they are very labour-saving and ergonomic thanks to their motorised drive.

But minimising effort is not their only plus point. A large area performance of up to 8,000 square metres, virtually dust-free work thanks to a flat pleated filter, extremely user-friendly operation and excellent cleaning

results even in unfavourable floor conditions – these are just some of the other reasons to opt for a walk-behind vacuum sweeper. Not to mention how easy they are to maintain.





# OUR FLAGSHIP MACHINE

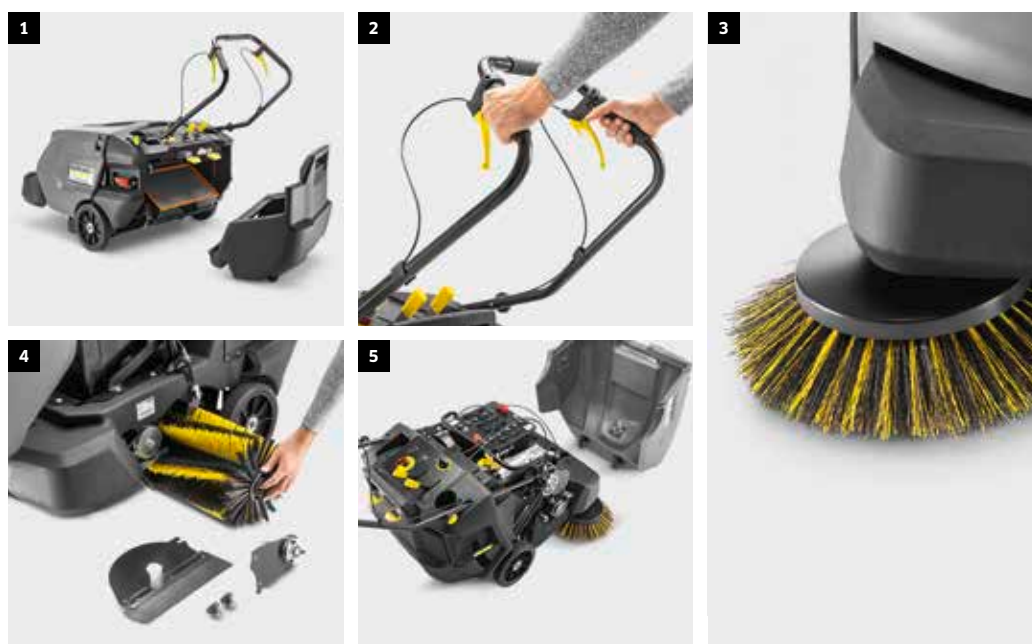


## KM 85/50 W

The most powerful model is suitable for areas up to 8,000 m<sup>2</sup> in size.



The walk-behind vacuum sweeper KM 85/50 W impresses with high area performances. The battery-powered model has the added convenience of a traction drive: sweeping doesn't get much easier than this.



**1. Flat pleated filter system**

- Large flat pleated filter with 2.3 m<sup>2</sup> filter area
- Excellent cleaning thanks to dual scraper
- Fast filter access

**2. Intuitive operation via push handle**

- Forward and reverse traction drive via the push handle
- Simple and user-friendly operation

**3. Robust machine housing**

- Sturdy, double-walled plastic frame
- Retractable side brush protects against damage

**4. Floating main sweeper roller**

- Excellent dirt pick-up even when the floor is uneven
- No wear adjustment necessary
- Efficient and fast cleaning

**5. Simple servicing and detachable hood**

- Easy access to the inside of the machine
- Robust and reliable for the toughest applications
- No tools required to change sweeper roller, side brush or filter

# CLASSIC ALL-ROUNDER

Large waste container  
with telescopic handle  
and 40-litre capacity



## KM 75/40 W

The flexible all-rounder is designed for cleaning areas from around 600 m<sup>2</sup>.



Available as a battery-powered or petrol-engined version, the KM 75/40 W walk-behind vacuum sweeper is ideal for quick and thorough cleaning of outdoor areas such as car parks or school playgrounds.



#### 1. Flat pleated filter system

- Large flat pleated filter with 1.8 m<sup>2</sup> filter area
- Easy filter replacement from the clean side
- Filter wiper for effective filter cleaning

#### 2. Service and maintenance

- Easy machine access on both battery and petrol versions
- Hinged service hood

#### 3. Waste container with telescopic handle

- Telescopic handle and rollers for simple handling and emptying of waste container
- 40 l waste container capacity

#### 4. Fixed sweeper roller

- Contact pressure can be adjusted to suit ground conditions
- Wear adjustment can be made via lever operation
- Tool-free sweeper roller replacement

#### 5. Cleaning hard floors and carpeted surfaces

- Diverse application options
- Optional cleaning kit available for carpet and artificial turf

A man in a light blue polo shirt and dark blue trousers is operating a compact, motorized sweeper. He is pushing the machine along a paved walkway next to a modern building with large windows and a grey metal structure. The sweeper has a large front wheel, a smaller rear wheel, and two rotating brushes at the back. The text 'AGILE AND VERSATILE' is overlaid in large, white, bold letters on the left side of the image.

# AGILE AND VERSATILE

Perfect if you want to be efficient and save space: compact sweepers/vacuum sweepers are even effective for sweeping in tight spaces.

The easy-to-transport folding design of the compact sweepers/vacuum sweepers makes them a truly portable option – so you can easily use them in several loca-

tions. Plus, with the height-adjustable push handles, excellent ergonomics are guaranteed. And the intuitive operation makes them quick and easy to use.





# TWO FOR SPECIAL TASKS



## KM 70/30 C AND KM 70/25 C

Both models can be used most effectively on areas measuring between 300 and 4,000 m<sup>2</sup>.



The KM 70/30 C and KM 70/25 C are manual sweepers designed for indoor and outdoor cleaning. The flat pleated filter and electrically driven sweeper roller and side brushes ensure sweeping is low-dust and low-hassle.



#### 1. 36 V Li-ion Kärcher Battery Power+ battery

- Exchangeable Li-ion battery
- Up to 3 hrs battery runtime, depending on the model
- Display showing remaining battery runtime

#### 2. Storage area

- Storage area with fastening options
- Can be used to transport additional cleaning equipment

#### 3. Gripper with mount (optional accessory)

- Simple handling and emptying of waste container

#### 4. Sweeper roller adjustment

- Simple configuration and wear adjustment for sweeper roller
- Parking position to lift the sweeper roller off the floor

#### 5. Adjustable push handle

- Can be adjusted over three positions for ergonomic working conditions
- Space-saving parking position



#### 6. KM 70/25 C with foam filter

- Passive filtration without suction
- For outdoor applications



#### 7. KM 70/30 C with flat pleated filter

- Active filtration with suction
- For indoor and outdoor applications with high concentrations of fine dust

# SMALL SIZE, BIG IMPACT

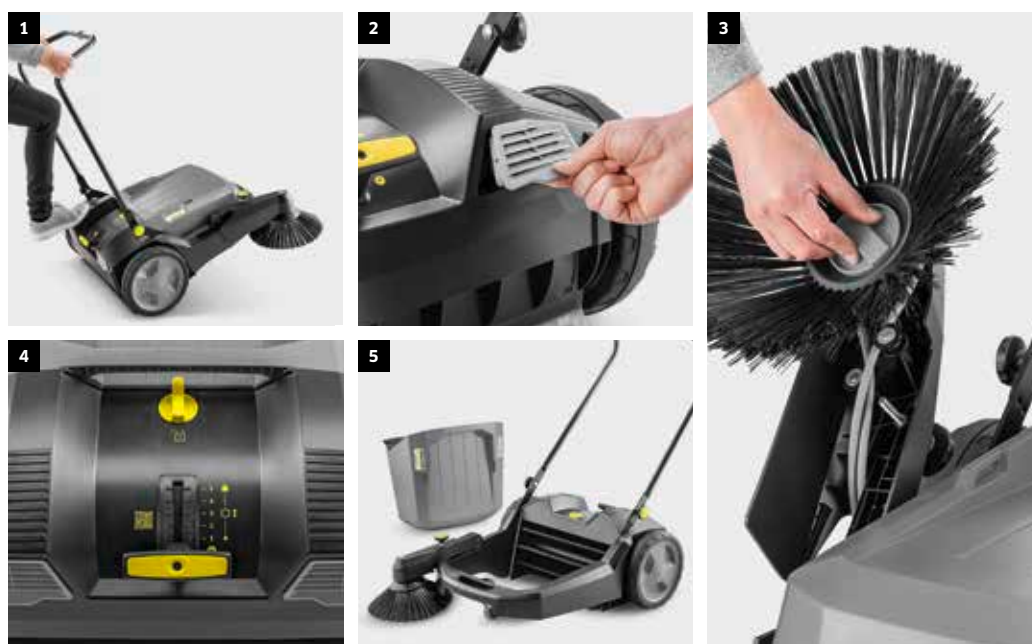


## KM 70/20 C

Our entry-level model makes light work of areas between 200 and 2,000 m<sup>2</sup>.



Whether it is for spot cleaning or longer working intervals, the extremely manoeuvrable KM 70/20 C sweeper cleans the smallest corners with its sweeper roller and side brushes, which are operated by wheel drive.



#### 1. Adjustable push handle

- Can be adjusted over three positions for ergonomic working conditions
- Space-saving parking position thanks to folding design

#### 2. Filter system

- Integrated filter system with replaceable foam filter cartridges
- Reduced dust impact when sweeping

#### 3. Lifting and replacing the side brushes

- Side brushes can be lifted to reduce dust generation
- No tools required to replace the side brush

#### 4. Sweeper roller adjustment

- Contact pressure of each sweeper roller can be adjusted individually
- Simple configuration and wear adjustment for sweeper roller

#### 5. Large waste container

- Simple handling and emptying of waste container
- Corrosion-resistant plastic container

# WALK-BEHIND AND COMPACT VACUUM SWEEPERS

	Drive type	Max. battery runtime (hrs)	Working width without side brush/ with 1 side brush/ with 2 side brushes (mm)	Max. area performance with 1 side brush/ with 2 side brushes (m <sup>2</sup> /h)	Waste container (l)	Forward throw	Overthrow sweeping principle	Application: hard floors	Application: carpet	Application: artificial turf	Order no.
<b>Walk-behind vacuum sweepers</b>											
KM 85/50 W Bp Pack 2SB	Battery	2.5	615/850/1,085	3,825/4,890	50	-	■	■	-	-	1.351-119.0
KM 85/50 W Bp Pack	Battery	2.5	615/850/-	3,825/-	50	-	■	■	-	-	1.351-117.0
KM 85/50 W Bp	Battery	-	615/850/-	3,825/-	50	-	■	■	-	-	1.351-116.0
KM 75/40 W Bp Pack	Battery	2.5	550/750/-	3,375/-	40	-	■	■	□	□	1.049-207.0
KM 75/40 W Bp	Battery	-	550/750/-	3,375/-	40	-	■	■	□	□	1.049-206.0
KM 75/40 W G	Petrol	-	550/750/-	3,375/-	40	-	■	■	□	□	1.049-216.0
<b>Compact vacuum sweepers</b>											
KM 70/30 C Bp 2SB	Battery	2.0*	480/700/920	2,800/3,920	45	■	-	■	-	-	1.517-231.0
KM 70/25 C Bp 2SB	Battery	3.4*	480/700/920	2,800/3,920	45	■	-	■	-	-	1.517-230.0
KM 70/20 C 2SB	-	-	480/700/920	2,800/3,920	45	■	-	■	-	-	1.517-131.0
KM 70/20 C	-	-	480/700/-	2,800/-	45	■	-	■	-	-	1.517-130.0

■ Standard. □ Optional with attachment kit. \* Kärcher Battery Power+ 36/75.







# WHAT IF THE FUTURE OF CLEANING CHANGES TOMORROW?

No matter how radically your business changes, we can help you to keep up with the challenges ahead. Just reach out to us to reach for the stars.

**Nothing can stop you. With services and digital solutions from Kärcher.**



cleaning consulting



all brands service



financial solutions



service packages



rental



mykärcher business



used



original spare parts



equipment management



visual remote support



You can find more information about our services at [karcher.com](https://www.karcher.com)



# SUSTAINABILITY MAKES THE DIFFERENCE

**At Kärcher, sustainability is an aspiration and driving force.**

This is why we not only impress with our powerful cleaning systems but also take responsibility: for the environment, our products, the supply chain, society and our staff.



## ZERO EMISSIONS

### Setting the course for climate protection

As a leading, climate-friendly company in our industry, we have been using green electricity for production in all our factories worldwide since 2021. To reduce our carbon footprint, we save energy and invest in efficient systems and buildings. Because for Kärcher, sustainability does not end at the factory gates, we also consider emissions from upstream and downstream activities.



## REDUCE, REUSE, RECYCLE

### Focus on conserving resources

We design our cleaning systems to be as environmentally friendly as possible, from manufacture and use right through to disposal. The aim: to reduce the use of primary raw material by procuring materials from sustainable sources, increasing the proportion of recycled plastic in products, and manufacturing long-lasting machines. We are also working on sustainable packaging and avoiding plastic waste.



## SOCIAL HERO

### Responsibility is our compass

In our supply chain, we also value environmentally friendly behaviour, longterm relationships, strict social standards and transparency. We follow clear criteria against which we measure ourselves and our partners. We take social responsibility seriously, which is why we fund organisations and people that campaign for the preservation of nature, culture and society.



You can find further information  
on the topic of sustainability in our  
company at [karcher.com](https://www.karcher.com)



**BE THE  
DIFFERENCE**

[karcher.com/sustain](https://www.karcher.com/sustain)

# KÄRCHER

makes a difference

Please contact us for more information:

## Head Office Germany

Alfred Kärcher SE & Co. KG  
Alfred-Kärcher-Straße 28-40  
71364 Winnenden

Phone +49 7195 14-0  
Fax +49 7195 14-2212

[www.karcher.com](http://www.karcher.com)

## USA

Kärcher North America  
6398 N. Karcher Way  
Aurora, CO 80019

Phone +1 800 444-7654  
Fax +1 866 271-0520

[www.karcherna.com](http://www.karcherna.com)

## Canada

Kärcher Canada Inc.  
275 Pendant Drive  
Mississauga, Ontario L5T 2W9

Phone +1 905 364-5006  
Fax +1 905 672-3155

[www.karcher.ca](http://www.karcher.ca)

## United Kingdom

Kärcher (UK) Ltd  
Kärcher House  
Brookhill Way  
Banbury  
Oxon OX16 3ED

Phone +44 1295 752-000  
Fax +44 1295 752-103

[www.karcher.co.uk](http://www.karcher.co.uk)

## Ireland

Kärcher Ltd (Ireland)  
Unit 3, Redcow Retail Centre  
Robinhood Road  
Ballymount, Dublin 22  
D22 PY03

Phone +353 1 409-7777  
Fax +353 1 409-7775

[www.karcher.ie](http://www.karcher.ie)

## South East Asia

Karcher Southeast Asia Ltd  
1005 Srinakarin Road  
Suang Luang, Bangkok 10250  
Thailand

Phone +66 2021 2838  
Fax +66 2120 7575

[info.thailand@karcher.com](mailto:info.thailand@karcher.com)  
[www.karcher.com/th](http://www.karcher.com/th)

## Hong Kong

Kärcher Limited  
Unit 01, 22/F, Westley Square  
48 Hoi Yuen Road  
Kwun Tong, Kowloon

Phone +852 2 357-5863  
Fax +852 2 357-5632

[www.karcher.com.hk](http://www.karcher.com.hk)

## Australia

Karcher Pty Ltd  
385 Ferntree Gully Road  
Mount Waverley  
Victoria, AU 3149

Phone 1800 675-714  
(Free Call)

[www.karcher.com.au](http://www.karcher.com.au)

## New Zealand

Karcher Ltd  
66 Allens Road  
East Tamaki  
Auckland 2013

Phone +64 9 274-4603  
Fax +64 9 274-6932

[www.karcher.co.nz](http://www.karcher.co.nz)

## North Africa

Kärcher SARL  
Immeuble Yasmine Tower  
Bloc A 6ème étage, bureau A 6.6  
Centre Urbain Nord  
1082 Tunis  
Tunisia

Phone +216 36339020

[info@tn.karcher.com](mailto:info@tn.karcher.com)  
[www.karcher.tn](http://www.karcher.tn)

## East Africa

Kärcher Limited  
Muthangari Drive  
P.O. Box 40111-00100  
Nairobi  
Kenya

Phone +254 700085927

[info@ke.karcher.com](mailto:info@ke.karcher.com)  
[www.karcher.com/ke](http://www.karcher.com/ke)

## South Africa

Karcher (Pty) Ltd  
P.O. Box 1509  
2 North Rand Road  
Hughes Ext 72  
Boksburg  
1459  
Johannesburg

Phone +27 11 657-7300  
Fax +27 11 657-7440

[www.karcher.co.za](http://www.karcher.co.za)

## Middle East

Karcher FZE  
Quality Cleaning Systems  
Jebel Ali Free Zone  
Plot No. S-10104 South Zone  
RA 08, XB 1, Jebel Ali  
Dubai

Phone +971 4 886-1177

Fax +971 4 886-1575

[customercare@ae.karcher.com](mailto:customercare@ae.karcher.com)  
[www.karcher.ae](http://www.karcher.ae)

## Qatar

Karcher LLC  
Office No 133, Regus Building  
D Ring Road  
PO Box 35176

Phone +974 4 423-1319

[customercare@ae.karcher.com](mailto:customercare@ae.karcher.com)  
[www.karcher.ae](http://www.karcher.ae)

## Caribbean

Karcher S.R.L.  
Calle 5ta, esq. Calle 18, Nave 1  
Villa Aura  
Santo Domingo Oeste  
Dominican Republic

Phone +1 809 379-3700  
Fax +1 809 379-3777

[info@do.karcher.com](mailto:info@do.karcher.com)  
[www.karcher.com/do](http://www.karcher.com/do)